

CEM II / B-L 32,5 N


 TECHNICAL
 DATA SHEET

Product Name

Limestone Portland Cement

Related Standard

NT 47.01 (2005)

Packaging

Bag: 50 kg

Delivery and Reception conditions

NT 47.16 (1998)

Recommended Application

- Concrete reinforced or unreinforced current.
- Unreinforced concrete for general use.
- To lean concrete paved, roads and highways.
- Current Precast concrete unreinforced.
- Pre-stressed concrete manufactured conditions normal productivity.
- Concreting in large masses.
- Concrete ready for use.
- Masonry, achieving paving.

Composition

Clinker	65-79%
Limestone	21-35%
Calcium sulfate setting regulator	

Characteristics

- Slow development of initial resistance.
- Normal growth level and mechanical resistance after 7 days.
- Good maneuverability.

Attributes

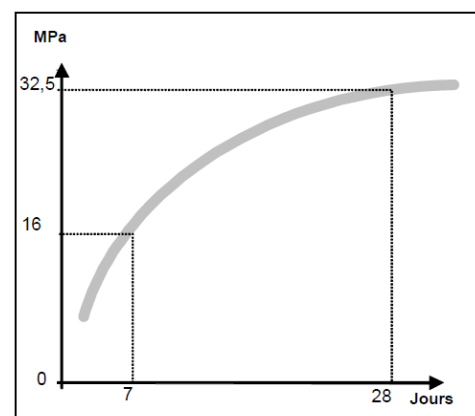
Mechanical and Physical

Initial Setting Time - (min)	≥ 60
Soundness (Expansion) - (mm)	≤ 10
Early strength (7 days) - (MPa)	≥ 16
Final strength (28 days) - (MPa)	≥ 32.5

Chemical


Sulfate content (SO ₃)	$\leq 3.5\%$
Chloride content (Cl)	$\leq 0.1\%$

Compression Mechanical Strength



Minimum growth curve

CEM II / B-L 32,5 N



TECHNICAL
DATA SHEET

Caution measures

- With **dosage** and the **water/cement ratio**.
- During the curing process, concrete must be **kept moist** and prevent its drying.

Contraindications

- Contact with **aggressive environments**, specially water and corrosive land.
- **Quick removal from the formwork**.