

# CEM II / A-L 32,5 R


 TECHNICAL  
 DATA SHEET

## Product Name

Limestone Portland Cement

## Related Standard

NT 47.01 (2017)

## Packaging

Bag: 50 Kg

## Delivery and Reception conditions

NT 47.16 (1998)

## Recommended Application

- Concrete reinforced or unreinforced current.
- Unreinforced concrete for general use.
- To lean concrete paved, roads and highways.
- Current Precast concrete unreinforced.
- Pre-stressed concrete manufactured conditions normal productivity.
- Concreting in large masses.
- Concrete ready for use.
- Masonry, achieving paving.

## Composition

Clinker	≥ 80%
Limestone	≤ 20%
Calcium sulfate setting regulator	

## Characteristics

- Slow development of initial resistance.
- Good maneuverability.

## Attributes

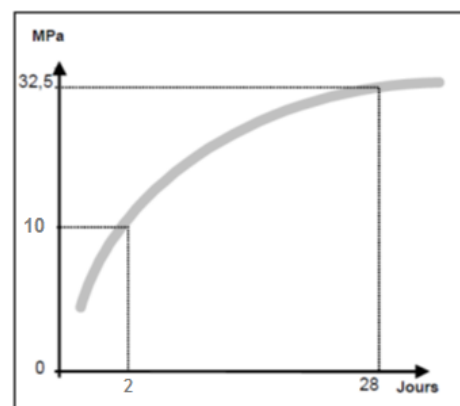
### Mechanical and Physical

Initial Setting Time - (min)	≥ 60
Soundness (Expansion) - (mm)	≤ 10
Early strength (2 days) - (MPa)	≥ 10
Final strength (28 days) - (MPa)	≥ 32.5

### Chemical


Sulfate content (SO <sub>3</sub> )	≤ 3.5%
Chloride content (Cl)	≤ 0.1%

## Compression Mechanical Strength



Minimum growth curve

## CEM II / B-L 32,5 N



TECHNICAL  
DATA SHEET

### Caution measures

- With **dosage** and the **water/cement ratio**.
- During the curing process, concrete must be **kept moist** and prevent its drying.

### Contraindications

- Contact with **aggressive environments**, specially water and corrosive land.
- **Quick removal from the formwork**.